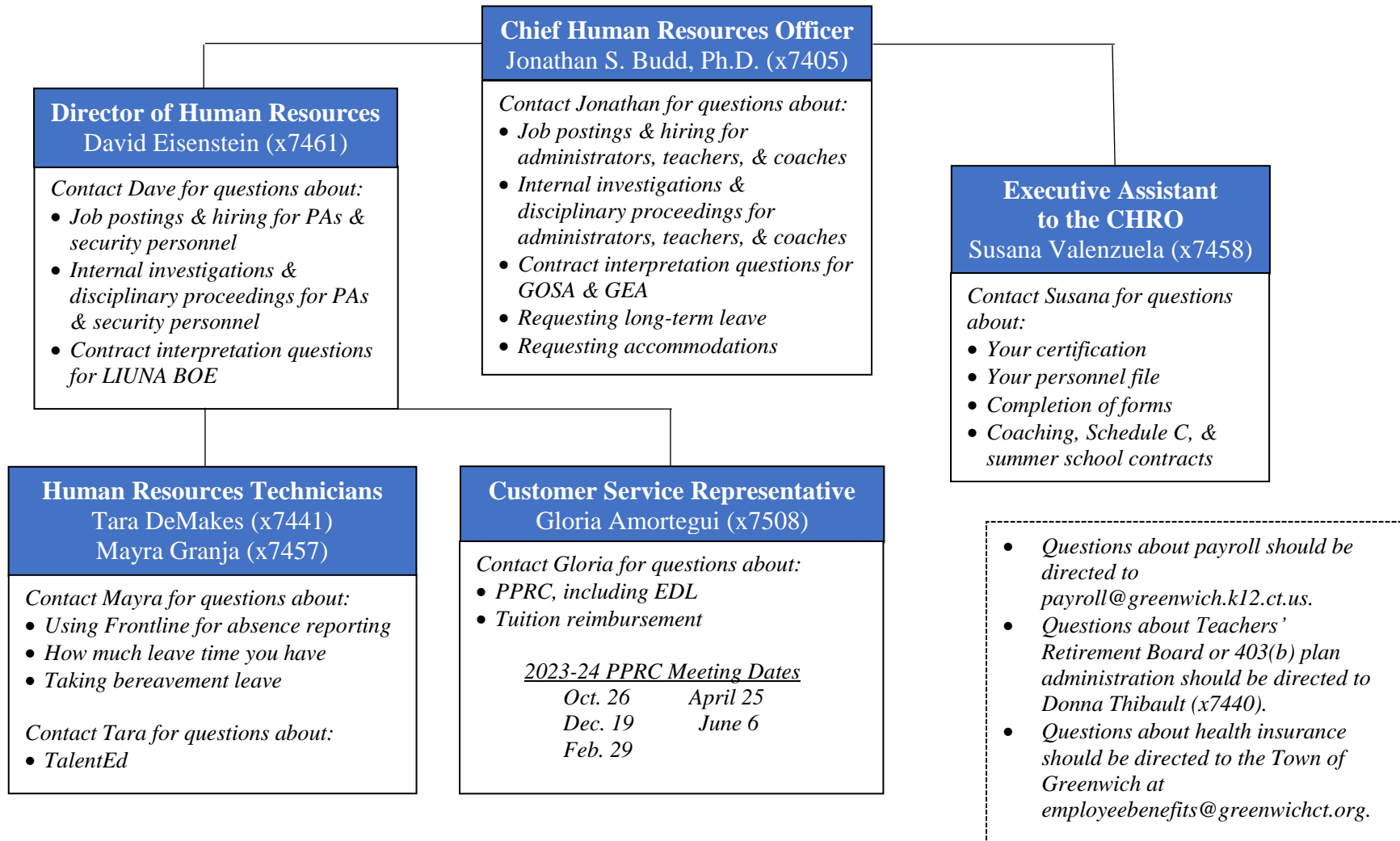


**Greenwich Public Schools Human Resources Department
 Contacts for Major Functions related to GPS Staff*
 as of December, 2023**



* Note: The chart above denotes only major job responsibilities for GPS staff (administrators, teachers, PAs, and security personnel), and does not include HR job responsibilities fulfilled for Town of Greenwich employees working for the BOE.